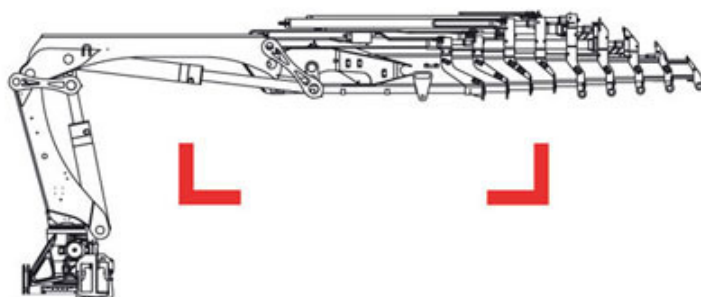
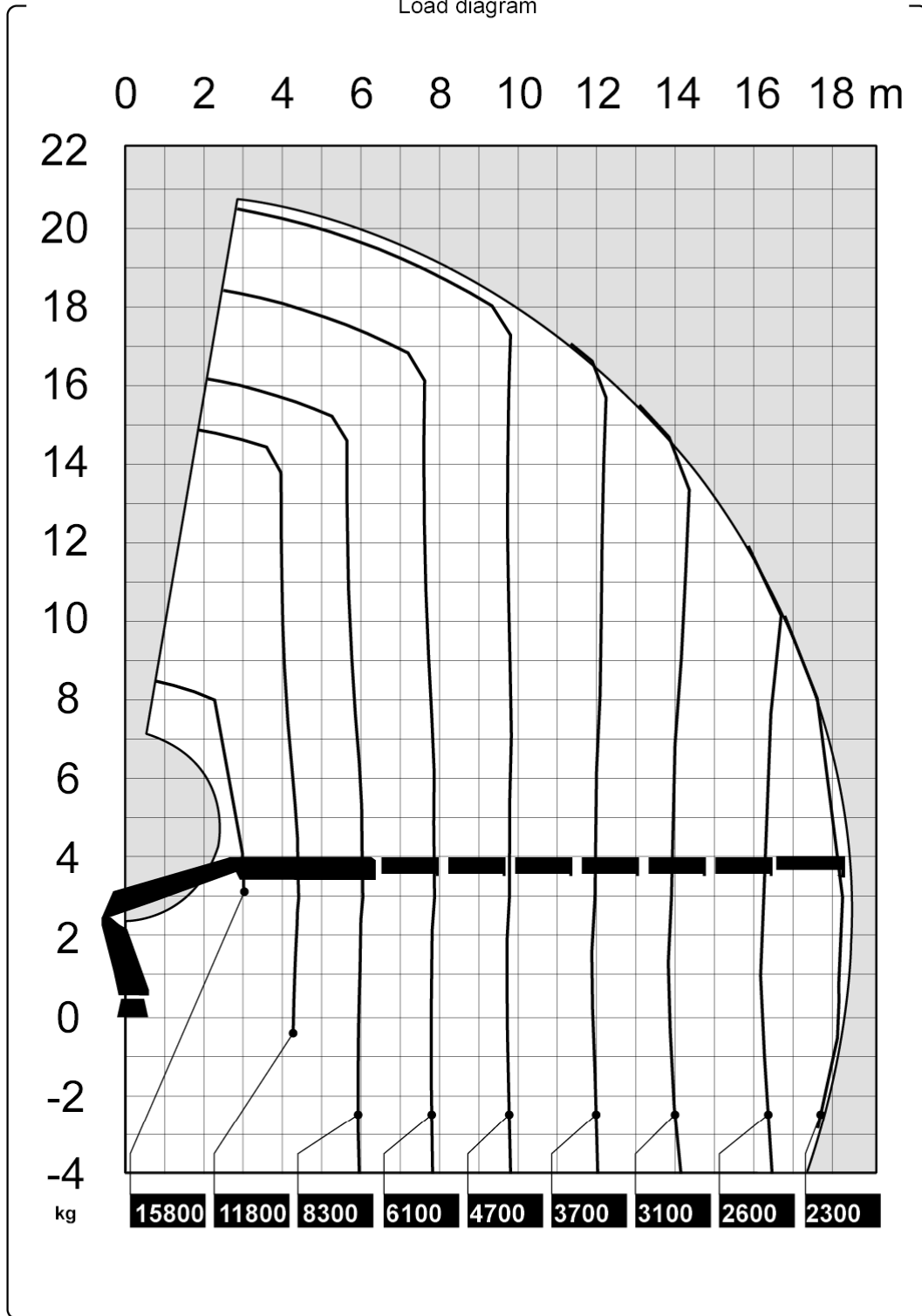


HIAB 600 E-7 HiPro



Technical Data

Load diagram



The HIAB XS range



Version

HIAB 600 E-7 HiPro

Lifting capacity	kNm	511
Lifting capacity	tm	52.1
Lifting capacity (ADC)	kNm	0
Lifting capacity (ADC)	tm	0.0
Outreach - lifting capacity, standard	m-kg	3.1 - 15,800 4.4 - 11,800 6.0 - 8,300 7.8 - 6,100 9.7 - 4,700 11.7 - 3,700 13.8 - 3,100 16.0 - 2,600 18.2 - 2,300
Outreach - lifting capacity, manual extensions	m-kg	
Hydraulic outreach, standard	m	18.4
Hydraulic boom extension	m	13.9
Outreach, manual extensions	m	0.0
Lifting height above installation level, hydr/man	m	20.8 / 0.0
Rec. oil flow	l/min	90 - 140
Power needed at rec. oil flow V80	kW	-
Power needed at rec. oil flow V91	kW	48- 75
Working pressure	Mpa	32.0
Oil in tank	l	0 - 250
Tank capacity	l	0 - 285
Slewing angle	°	continuous
Max slope viable at full capacity	°	5
Slewing torque, gross	kNm	60.0
Slewing speed 80	°/s	0
Slewing speed	°/s	10
Lifting speed at standard hydraulic outreach	m/s	1.3
Height in folded position	mm	2,503
Width in folded position	mm	2,500
Install space required. Rotation area not included	mm	1,569
Install space required with hose and pipe kit	mm	1,782
Weight		
Crane in standard version without support legs	kg	6,100
Top seat	kg	0
Frame attachments	kg	115 - 0
Support leg equipment	kg	1,120 - 1,245

Data sheet

HIAB 600 E-7 HiPro

