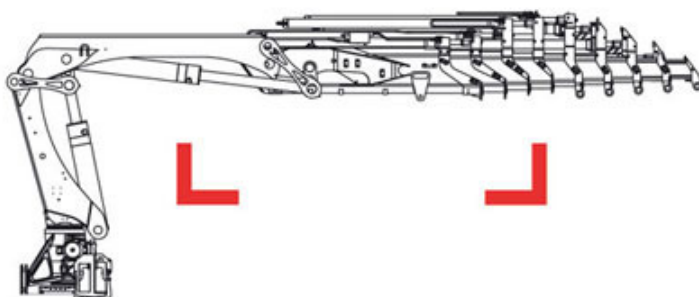
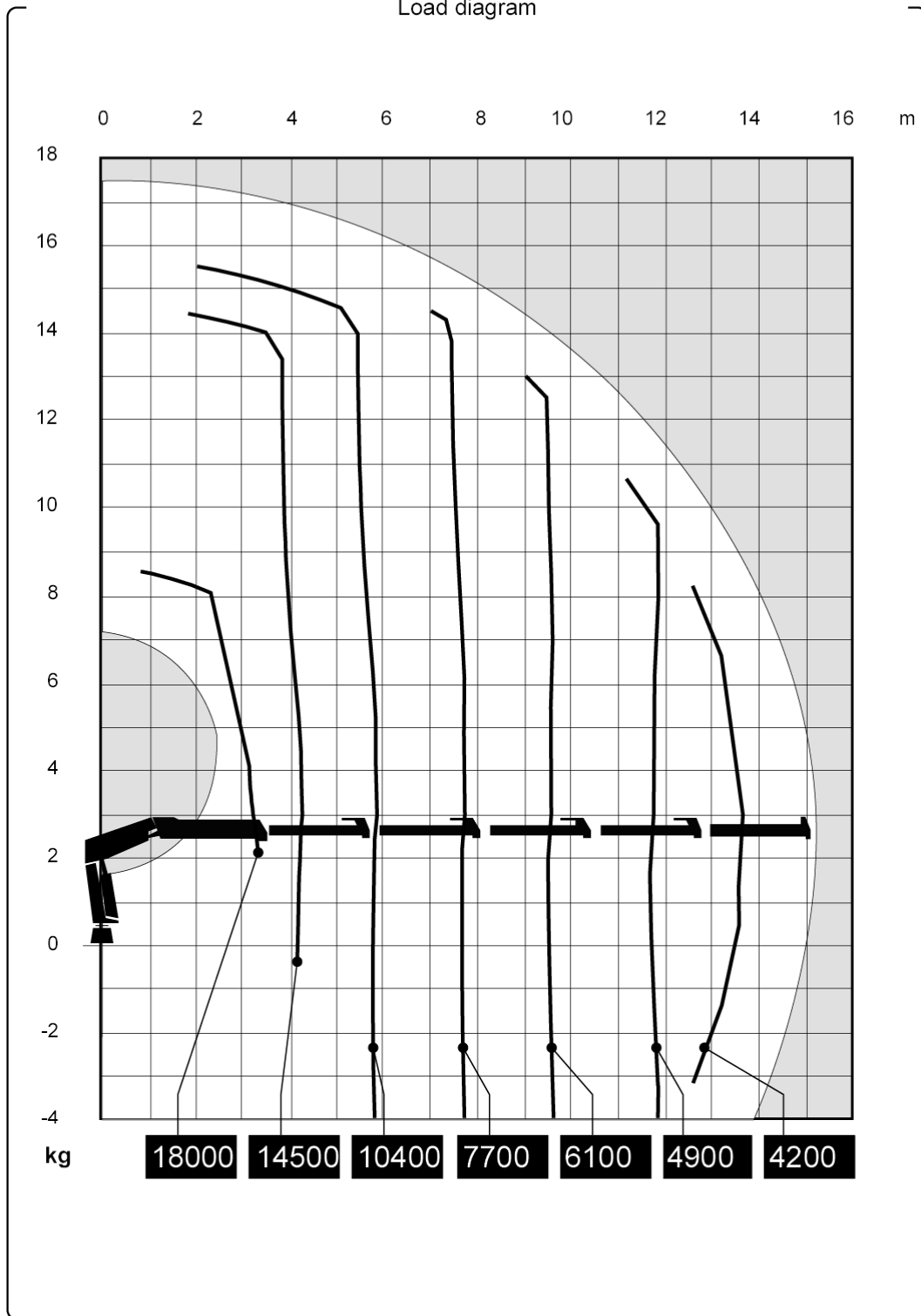


HIAB 700 E-5 HiPro



Technical Data

Load diagram



The HIAB XS range



Version

HIAB 700 E-5 HiPro

Lifting capacity	kNm	614
Lifting capacity	tm	62.6
Lifting capacity (ADC)	kNm	0
Lifting capacity (ADC)	tm	0.0
Outreach - lifting capacity, standard	m-kg	3.3 - 18,000 4.3 - 14,500 5.9 - 10,400 7.7 - 7,700 9.6 - 6,100 11.6 - 4,900 13.7 - 4,200
Outreach - lifting capacity, manual extensions	m-kg	
Hydraulic outreach, standard	m	13.9
Hydraulic boom extension	m	9.5
Outreach, manual extensions	m	0.0
Lifting height above installation level, hydr/man	m	16.3 / 0.0
Rec. oil flow	l/min	90 - 140
Power needed at rec. oil flow V80	kW	-
Power needed at rec. oil flow V91	kW	48- 75
Working pressure	Mpa	32.0
Oil in tank	l	0 - 250
Tank capacity	l	0 - 285
Slewing angle	°	continuous
Max slope viable at full capacity	°	5
Slewing torque, gross	kNm	69.0
Slewing speed 80	°/s	0
Slewing speed	°/s	10
Lifting speed at standard hydraulic outreach	m/s	0.8
Height in folded position	mm	2,470
Width in folded position	mm	2,500
Install space required. Rotation area not included	mm	1,569
Install space required with hose and pipe kit	mm	1,698
Weight		
Crane in standard version without support legs	kg	6,160
Top seat	kg	0
Frame attachments	kg	115 - 0
Support leg equipment	kg	1,180 - 1,305

Data sheet

HIAB 700 E-5 HiPro
