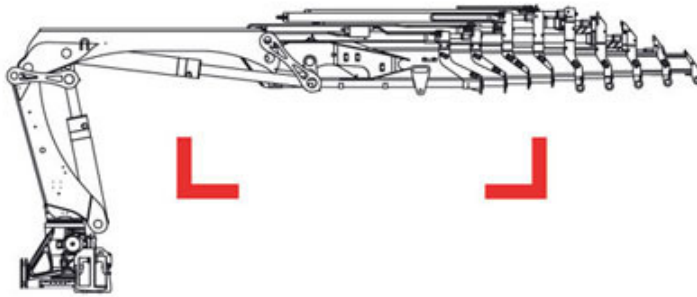
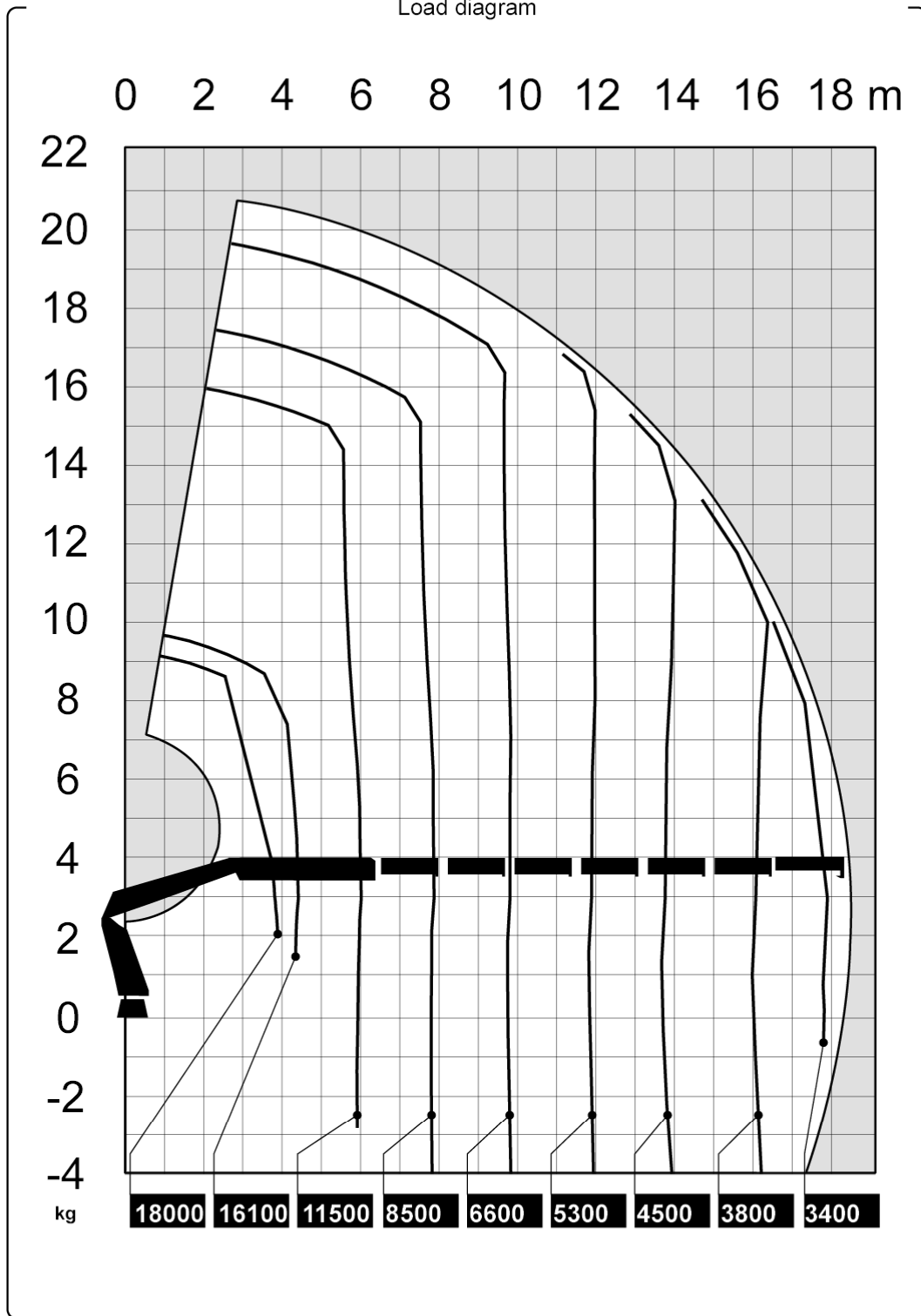


HIAB 800 E-7 HiPro



Technical Data

Load diagram



The HIAB XS range



Version

HIAB 800 E-7 HiPro

Lifting capacity	kNm	696
Lifting capacity	tm	71.0
Lifting capacity (ADC)	kNm	0
Lifting capacity (ADC)	tm	0.0
Outreach - lifting capacity, standard	m-kg	3.8 - 18,000 4.4 - 16,100 6.0 - 11,500 7.8 - 8,500 9.7 - 6,600 11.7 - 5,300 13.7 - 4,500 15.8 - 3,800 17.9 - 3,300
Outreach - lifting capacity, manual extensions	m-kg	
Hydraulic outreach, standard	m	18.1
Hydraulic boom extension	m	13.6
Outreach, manual extensions	m	0.0
Lifting height above installation level, hydr/man	m	20.5 / 0.0
Rec. oil flow	l/min	90 - 120
Power needed at rec. oil flow V80	kW	-
Power needed at rec. oil flow V91	kW	-
Working pressure	Mpa	32.0
Oil in tank	l	0 - 0
Tank capacity	l	0 - 0
Slewing angle	°	continuous
Max slope viable at full capacity	°	4
Slewing torque, gross	kNm	69.0
Slewing speed 80	°/s	10
Slewing speed	°/s	10
Lifting speed at standard hydraulic outreach	m/s	0.9
Height in folded position	mm	2,488
Width in folded position	mm	2,500
Install space required. Rotation area not included	mm	1,678
Install space required with hose and pipe kit	mm	1,808
Weight		
Crane in standard version without support legs	kg	7,075
Top seat	kg	0
Frame attachments	kg	0 - 0
Support leg equipment	kg	1,180 - 1,315

Data sheet

HIAB 800 E-7 HiPro

